

DIGITAL INSPECTION CAMERA

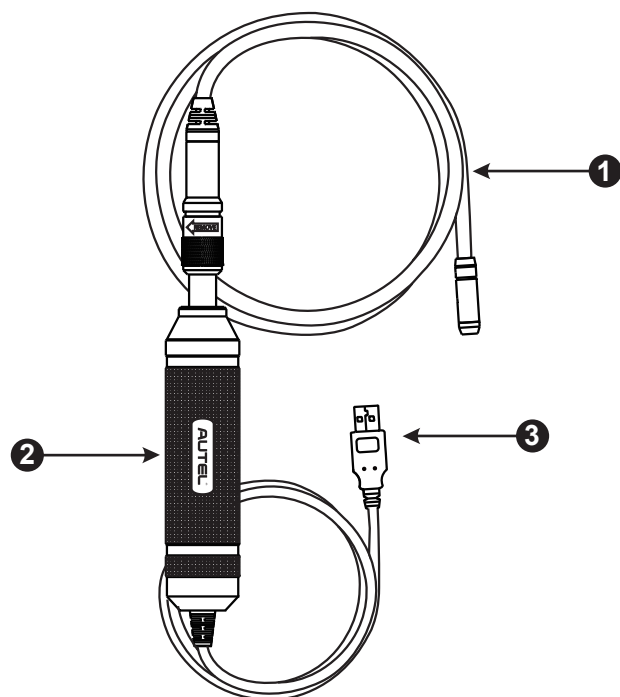
MAXIVIDEO MV105/108

PRODUCT INTRODUCTION

The MV105/108 digital inspection camera is designed to work with MaxiSys series products or PC. It turns your MaxiSys tablet into a video inspection scope, allowing you to examine difficult-to-reach areas normally hidden from sight. It is capable of recording digital still images and videos, which offers you an economical solution to inspect machinery, facilities, and infrastructure in a safe and quick way.

NOTE: The power of MaxiVideo inspection camera is directly supplied by the USB port, and no external power source is needed.

1. Removable Imager Head Cable – connects to the tool when performing digital inspections for image and video viewing
2. Handgrip – ergonomically designed handle for comfortable grips and agile operation
3. USB Cable – connects the Digital Inspection Camera to MaxiSys tablet

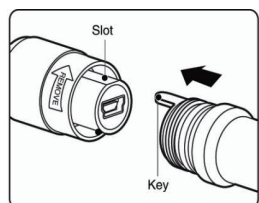


TECHNICAL SPECIFICATIONS

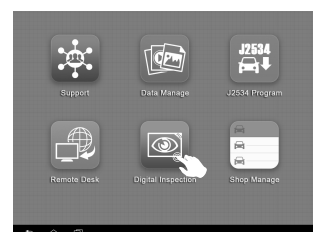
Item	Description
Optimal Viewing Distance	MV105: 3/8" to 12" (0.95cm to 30cm) MV108: 1" to 14" (2.54cm to 35.56cm)
Lighting	Fully adjustable LED
Image Capture	MV108 (640x480); MV105 (320 x 240)
Operating Temperature	Main Unit: 0°C to 50°C; Cable: -10°C to 70°C
Storage Temperature	-20°C to 75°C
Waterproof	Imager head and cable to 1m
Weight	0.3kg with 8.5mm diameter imager head 0.2kg with 5.5mm diameter imager head
Compliance	FCC (EMC), CE (EMC and LVD)

IT ONLY TAKES 3 STEPS TO START!

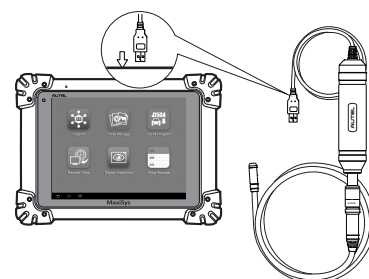
- 1 Connect the Removable Imager Head Cable to the Handgrip. Make sure the key and slot are properly aligned. Once they are aligned, finger-tighten the knurled knob to hold the connection firmly in place.



- 2 Power up the MaxiSys Tablet, and select the "Digital Inspection" application on the Job Menu.



- 3 Connect the MaxiVideo inspection camera to the MaxiSys Tablet with the USB connection, and that's it!



Imager Head Accessories

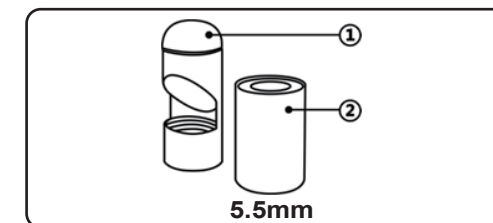
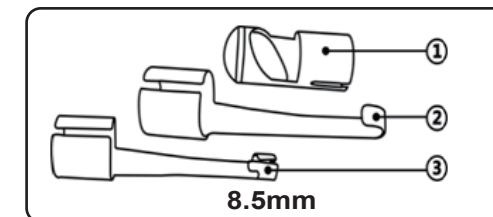
The MaxiVideo Inspection Camera kit is supplied with useful accessories, such as magnet, hook and mirror, which enable the video scope to perform special tasks

8.5mm Imager Head Accessories

1. Magnet – picks up small metal objects, such as dropped rings or screws
2. Hook – unclogs obstacles and picks up wires in the pipes or confined areas
3. Mirror – helps to look around corners and see the unreachable areas

5.5mm Imager Head Accessories

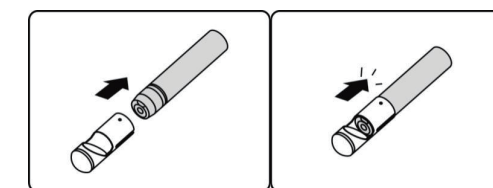
1. Mirror – helps to look around corners and see the unreachable areas
2. Magnet - picks up small metal objects, such as dropped rings or screws



The accessory assembly is as simple as the picture shows!

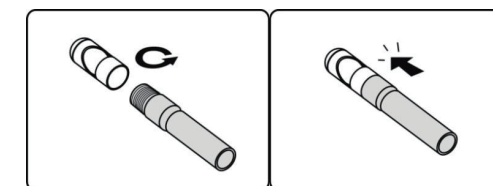
For MV108 (with 8.5mm imager head)

The three accessories, including the Magnet, Hook, and Mirror, can be attached to the Imager Head as described. Hold the accessory and the imager head. Slip the end of the accessory over the imager head and then fix it as shown.



For MV105 (with 5.5mm imager head)

The two accessories, both the Magnet and Mirror, can be attached to the Imager Head as described. Hold the accessory and the imager head as shown. Screw the thread part of the accessory over the imager head and then fix it.



CERTIFICATION

FCC Compliance

This equipment has been tested and found to comply with the limits for a Class B digital device, pursuant to Part 15 of the FCC Rules. These limits are designed to provide reasonable protection against harmful interference in a residential installation.

This equipment generates uses and can radiate radio frequency energy and, if not installed and used in accordance with the instructions, may cause harmful interference to radio communications. However, there is no guarantee that interference will not occur in a particular installation. If this equipment does cause harmful interference to radio or television reception, which can be determined by turning the equipment off and on, the user is encouraged to try to correct the interference by one or more of the following measures:

- Reorient or relocate the receiving antenna.
 - Increase the separation between the equipment and receiver.
 - Consult the dealer or an experienced radio/TV technician for help.
- This device complies with part 15 of the FCC Rules. Operation is subject to the following two conditions:
- This device may not cause harmful interference, and
 - This device must accept any interference received, including interference that may cause undesired operation.

Changes or modifications not expressly approved by the party responsible for compliance could void the user's authority to operate the equipment.

AUTEL®

Autel Intelligent Technology Corp., Ltd.
All Rights Reserved
www.autel.com

CE 0700 FC